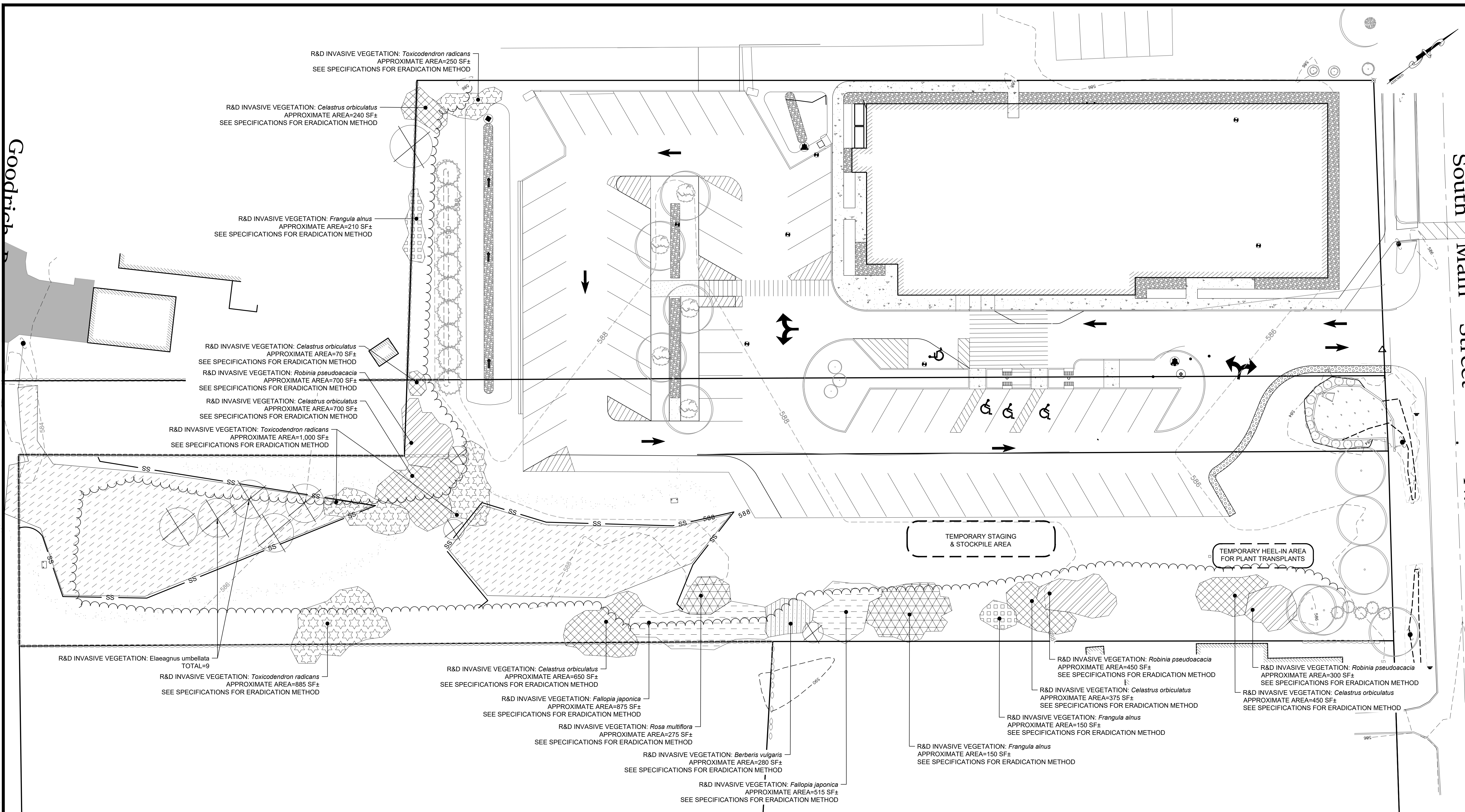


last modified: 11/17/21 printed: 11/24/21 by bl H:\Projects\2021\12\1087\Wolfeboro Public Library\Drawings\21087 ESC.dwg



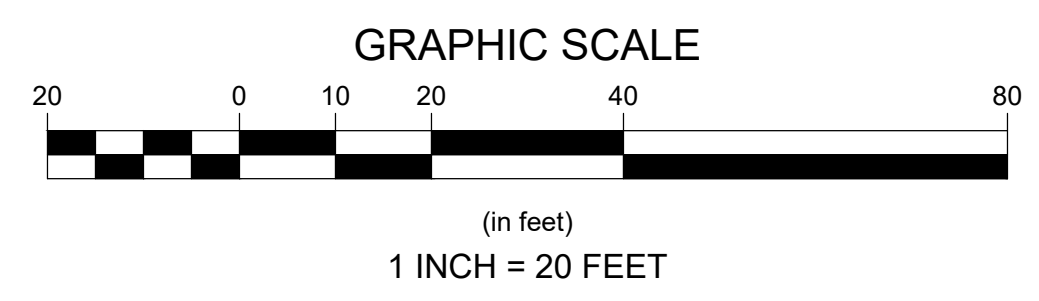
INVASIVE SPECIES MANAGEMENT NOTES:

- THE PROPOSED INVASIVE SPECIES MANAGEMENT PLAN AND METHODS FOR REMOVAL VARY BASED UPON SPECIES AND LOCATION. SEE PLAN. THE FOLLOWING NOTES ARE TO BE USED AS A GUIDE AND SHOULD BE COORDINATED BETWEEN THE LOCAL CONSERVATION COMMISSION, LANDSCAPE ARCHITECT, LIBRARY STAFF, AND CONTRACTOR TO DETERMINE BEST METHODS AND TIME OF YEAR FOR REMOVAL.
- ELAEOGNUS UMBELLATA (AUTUMN OLIVE)**
- BEGIN BY FLAGGING EACH AUTUMN OLIVE TO BE REMOVED. SEE PLAN.
 - UPON APPROVAL OF FLAGGING, CUT ALL AUTUMN OLIVE PLANTS TO THE GROUND. LEAVE STUMPS APPROXIMATELY 1-2" ABOVE THE GROUND.
 - APPLY GLYPHOSATE (20% MINIMUM ACTIVE INGREDIENT) OR TRICLOPYR (8% MINIMUM ACTIVE INGREDIENT) DIRECTLY TO TRUNK OF ALL CUT STEMS. FOLLOW ALL LOCAL AND STATE REQUIREMENTS WHEN USING HERBICIDES. ENSURE PROPER SAFETY MEASURES ARE IN PLACE PRIOR TO BEGINNING WORK.
 - BAG AND REMOVE ALL CUTTINGS FROM THE PROJECT AREA. COORDINATE DISPOSAL OF BAGGED CUTTINGS AT A LOCAL INCINERATOR, OR AN APPROVED EQUAL DUMP SITE. UNDER NO CIRCUMSTANCE SHOULD INVASIVE PLANT MATERIAL BE SENT TO COMPOST.
 - CONDUCT FOLLOW-UP MONITORING IN 3-MONTH INTERVALS FOR 12 MONTHS TO ENSURE NO REGROWTH. COORDINATE ADDITIONAL HERBICIDE TREATMENTS AS REQUIRED.
- TOXICODENDRON RADICANS (POISON IVY)**
- BEGIN BY FLAGGING AREAS CONTAINING POISON IVY TO BE REMOVED. SEE PLAN.
 - IN ALL FLAGGED AREAS WITHOUT NATIVE PLANT MATERIAL WORTH PROTECTING, MANUALLY EXCAVATE THE FLAGGED AREA UP TO A DEPTH OF 3- FEET, ENSURING ALL ROOTMASS IS REMOVED. PROPERLY REMOVE AND DISPOSE OF EXCAVATED SPOILS AT AN APPROVED OFF-SITE LOCATION.
 - IN ALL AREAS WITH NATIVE PLANT MATERIAL WORTH PROTECTING, PRUNE LIVE STEMS OF FLAGGED ORIENTAL BITTERSWEET VEGETATION TO APPROXIMATELY 1-2" ABOVE THE GROUND.
 - WEARING LATEX GLOVES, APPLY GLYPHOSATE (20% MINIMUM ACTIVE INGREDIENT) OR TRICLOPYR (8% MINIMUM ACTIVE INGREDIENT) DIRECTLY TO TRUNK OF ALL CUT STEMS. FOLLOW ALL LOCAL AND STATE REQUIREMENTS WHEN USING HERBICIDES. ENSURE PROPER SAFETY MEASURES ARE IN PLACE PRIOR TO BEGINNING WORK.
 - BAG AND REMOVE ALL CUTTINGS FROM THE PROJECT AREA. COORDINATE DISPOSAL OF BAGGED CUTTINGS AT A LOCAL INCINERATOR, OR AN APPROVED EQUAL DUMP SITE. UNDER NO CIRCUMSTANCE SHOULD INVASIVE PLANT MATERIAL BE SENT TO COMPOST.

- REMOVE AND DISPOSE OF EXCAVATED SPOILS AT AN APPROVED OFF-SITE LOCATION.
- IN ALL FLAGGED AREAS WITH NATIVE PLANT MATERIAL THAT IS WORTH PROTECTING, PRUNE LIVE STEMS OF FLAGGED POISON IVY VEGETATION TO APPROXIMATELY 1-2" ABOVE THE GROUND.
 - WEARING LATEX GLOVES, APPLY GLYPHOSATE (20% MINIMUM ACTIVE INGREDIENT) OR TRICLOPYR (8% MINIMUM ACTIVE INGREDIENT) DIRECTLY TO THE ENDS OF ALL CUT STEMS. FOLLOW ALL LOCAL AND STATE REQUIREMENTS WHEN USING HERBICIDES. ENSURE PROPER SAFETY MEASURES ARE IN PLACE PRIOR TO BEGINNING WORK.
 - BAG AND REMOVE ALL CUTTINGS FROM THE PROJECT AREA. COORDINATE DISPOSAL OF BAGGED CUTTINGS AT A LOCAL INCINERATOR, OR AN APPROVED EQUAL DUMP SITE. UNDER NO CIRCUMSTANCE SHOULD INVASIVE PLANT MATERIAL BE SENT TO COMPOST.
- CELASTRUS ORBICULATUS (ORIENTAL BITTERSWEET)**
- BEGIN BY FLAGGING EACH AREA THAT CONTAINS ORIENTAL BITTERSWEET. SEE PLAN.
 - IN ALL AREAS WITHOUT NATIVE PLANT MATERIAL WORTH PROTECTING, MANUALLY EXCAVATE THE FLAGGED AREA UP TO A DEPTH OF 3- FEET, ENSURING ALL ROOTMASS IS REMOVED. PROPERLY REMOVE AND DISPOSE OF EXCAVATED SPOILS AT AN APPROVED OFF-SITE LOCATION.
 - IN ALL AREAS WITH NATIVE PLANT MATERIAL WORTH PROTECTING, PRUNE LIVE STEMS OF FLAGGED ORIENTAL BITTERSWEET VEGETATION TO APPROXIMATELY 1-2" ABOVE THE GROUND.
 - WEARING LATEX GLOVES, APPLY GLYPHOSATE (20% MINIMUM ACTIVE INGREDIENT) OR TRICLOPYR (8% MINIMUM ACTIVE INGREDIENT) DIRECTLY TO TRUNK OF ALL CUT STEMS. FOLLOW ALL LOCAL AND STATE REQUIREMENTS WHEN USING HERBICIDES. ENSURE PROPER SAFETY MEASURES ARE IN PLACE PRIOR TO BEGINNING WORK.
 - BAG AND REMOVE ALL CUTTINGS FROM THE PROJECT AREA. COORDINATE DISPOSAL OF BAGGED CUTTINGS AT A LOCAL INCINERATOR, OR AN APPROVED EQUAL DUMP SITE. UNDER NO CIRCUMSTANCE SHOULD INVASIVE PLANT MATERIAL BE SENT TO COMPOST.

- FALLOPIA JAPONICA (JAPANESE KNOTWEED)**
- BEGIN BY FLAGGING EACH AREA THAT CONTAINS JAPANESE KNOTWEED. SEE PLAN.
 - UPON APPROVAL OF FLAGGED AREAS, CUT AND BAG ALL VISIBLE BIOMASS. COORDINATE DISPOSAL OF BAGGED CUTTINGS AT A LOCAL INCINERATOR, OR AN APPROVED EQUAL DUMP SITE. UNDER NO CIRCUMSTANCE SHOULD INVASIVE PLANT MATERIAL BE SENT TO COMPOST.
 - MANUALLY EXCAVATE THE FLAGGED AREA UP TO 5- FEET BELOW GRADE, ENSURING THAT ALL ROOTMASS IS REMOVED. PROPERLY REMOVE & DISPOSE OF ALL EXCAVATED SPOILS IN AN APPROVED, OFF-SITE LOCATION.
 - CONDUCT FOLLOW-UP MONITORING IN 3-MONTH INTERVALS FOR 12 MONTHS TO ENSURE NO REGROWTH. COORDINATE ADDITIONAL EXCAVATION AS REQUIRED.
- ROSA MULTIFLORA (MULTIFLORA ROSE) + BERBERIS VULGARIS (BARBERRY) + FRANGULA ALNUS (GLOSSY BUCKTHORN)**
- BEGIN BY FLAGGING EACH MULTIFLORA ROSE, BARBERRY, AND GLOSSY BUCKTHORN SHRUB TO BE REMOVED. SEE PLAN.
 - UPON APPROVAL OF FLAGGING, CUT ALL INVASIVE SHRUBS TO THE GROUND. REMOVE AND PROPERLY DISPOSE OF INVASIVE BIOMASS AT AN APPROVED OFF-SITE LOCATION.
 - IN AREAS WITHOUT NATIVE VEGETATION WORTH PROTECTING, MANUALLY EXCAVATE THE FLAGGED AREA TO A MINIMUM DEPTH OF 4- FEET TO ENSURE ALL ROOTMASS IS REMOVED.
 - IN AREAS WITH NATIVE VEGETATION WORTH PROTECTING, APPLY GLYPHOSATE (20% MINIMUM ACTIVE INGREDIENT) OR TRICLOPYR (8% MINIMUM ACTIVE INGREDIENT) DIRECTLY TO ALL CUT STEMS. FOLLOW ALL LOCAL AND STATE REQUIREMENTS WHEN USING HERBICIDES. ENSURE PROPER SAFETY MEASURES ARE IN PLACE PRIOR TO BEGINNING WORK.

- CONDUCT FOLLOW-UP MONITORING IN 3-MONTH INTERVALS FOR 12 MONTHS TO ENSURE NO REGROWTH. COORDINATE ADDITIONAL HERBICIDE TREATMENTS AS REQUIRED.
- ROBINIA PSEUDOACACIA (BLACK LOCUST)**
- BEGIN BY FLAGGING EACH AREA THAT CONTAINS BLACK LOCUST. SEE PLAN.
 - UPON APPROVAL OF FLAGGED AREAS, CUT STEMS TO AN APPROXIMATE HEIGHT OF 1-2" ABOVE GROUND AND BAG ALL CUT BIOMASS. COORDINATE DISPOSAL OF BAGGED CUTTINGS AT A LOCAL INCINERATOR, OR AN APPROVED EQUAL DUMP SITE. UNDER NO CIRCUMSTANCE SHOULD INVASIVE PLANT MATERIAL BE SENT TO COMPOST.
 - WEARING LATEX GLOVES, APPLY GLYPHOSATE (20% MINIMUM ACTIVE INGREDIENT) OR TRICLOPYR (8% MINIMUM ACTIVE INGREDIENT) DIRECTLY TO TRUNK OF ALL CUT STEMS. FOLLOW ALL LOCAL AND STATE REQUIREMENTS WHEN USING HERBICIDES. ENSURE PROPER SAFETY MEASURES ARE IN PLACE PRIOR TO BEGINNING WORK.
 - CONDUCT FOLLOW-UP MONITORING IN 3-MONTH INTERVALS FOR 12 MONTHS TO ENSURE NO REGROWTH. COORDINATE ADDITIONAL EXCAVATION AS REQUIRED.



Revisions	Rev.	Date	By	Appr.	Description
▲	1				
▲	2				
▲	3				
▲	4				
▲	5				

Horsley Witten Group, Inc.
Sustainable Environmental Solutions
www.horsleywitten.com
80 Route 6A
Sandwich, MA 02563
508-833-6600 voice
508-833-3150 fax

Drawn By: KJK
Checked By: BRK
Designed By: EAL
Date: NOVEMBER 2021

Plan Set:
WOLFEBORO PUBLIC LIBRARY
ARCHITECTURAL LANDSCAPE DESIGN
WOLFEBORO, NH

Plan Title:
INVASIVE SPECIES MANAGEMENT PLAN

Prepared For:
Town of Wolfeboro Public Library Board of Trustees
84 South Main Street
Wolfeboro, NH
Phone: ---
Fax: ---

Survey Provided By:
Underwood Engineers
25 US-1
Potsdam, NH 03801
Phone: (603) 436-6192
Fax: (603) 431-4733
Date: MONTH 2010

Registration:

Project Number: 21087
Sheet: 4 of 17
Sheet Number: C-4

